



Rear Plate Accessory Information

Frendix USA, LLC
23300 Mercantile Rd | Beachwood, OH | 44122
P: (866) 924-5438 W: www.InnoLIFTUSA.com

InnoLIFT REAR PLATE FOR CARGO VANS

What is it?

- Our adjustable, aluminum plate is required for cargo vans with step bumpers. Adjusts to fit different makes and models of cargo vans.
- The plate attaches to your vehicle's cargo area floor and rests on the step bumper to create an uninterrupted 90-degree loading platform.
- Plywood flooring installation is recommended but can be used on composite floors.
- Used for loading / unloading only. Stores easily during transport.
- **Why do I need one?**
- For safe, fast and easy loading / unloading using InnoLIFT portable forklifts moving palletized freight.
- Keeps your load properly balanced & supported to avoid potential injury.

Parts and Description

Part#

RP800 (standard)

- Designed for **Medium** and **Large Open Bottom Loaders**
- 800 mm (31.5") wide

RP1000 (wide)

- Designed for **Large High-Capacity Open Bottom Loaders**
- 1000 mm (39.4") wide

RP1300 (extra wide)

- Designed for **Straddle Loaders**
- 13000 mm (51.2") wide



Nuts & bolts w/mounting plate

PLATE ASSEMBLY INSTRUCTIONS

Tools required: Allen head tool set, large Phillips-head screwdriver, 10 mm wrench, 13 mm wrench (an adjustable wrench can be used in lieu of the 10 mm and 13 mm wrenches), and a cordless drill with 5/16" or 3/8" wood drill bit.

Prior to installation, review the photos below to see how it looks fully assembled and installed on a cargo van.

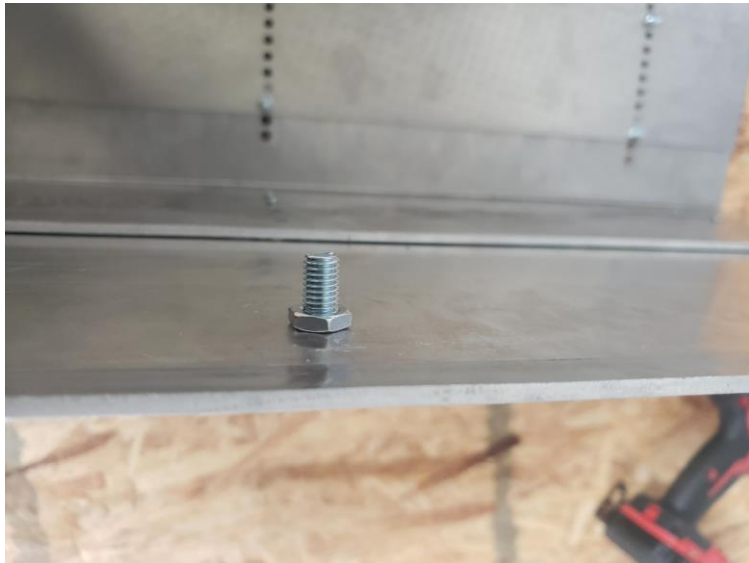
1. Place the large aluminum plate on the cargo floor with the beveled edge toward the inside of the vehicle and angled down. Then lay the larger of the two angled pieces underneath this first piece and adjust the total length of the horizontal top portion using the adjustment holes in the lower piece. Adjust the overall length so the rear vertical edge is flush with the rear edge of the step bumper and the inside beveled edge rests securely on the cargo floor. Fasten these two plates together using the 6 (shorter) allen head screws provided (2 for each of the 3 rows). The adjustment holes in the angled piece are tapped, so no nuts are required here.
2. Place the angled piece with the rubber feet flat on the step bumper with the vertical edge flush to (but not beyond) the outside of the bumper (for maximum stability). Use the flat adjustable piece(s) (as required, depending upon your vehicle's step bumper height) to determine the overall height needed to attach the lower angled piece resting on the step bumper to the (now assembled) top horizontal plate. There are 3 rows of adjustment holes drilled approximately every 1/2" of all the vertical pieces. Adjust the height so that the top (now assembled) horizontal portion of the rear plate is even with or slightly higher than the van floor. For safety reasons, the assembled rear plate should never be tilted down toward the rear of the vehicle. Assemble the vertical portion of the rear plate using the six (6) longer Phillips-head screws and 10 mm nylon lock nuts provided (2 for each of the 3 vertical rows), affixing it to the previously assembled top portion.
3. Insert the single (larger) Phillips-head mounting screw through the single (larger) hole in the horizontal portion of the top plate and fasten using the 13 mm nut provided. Once assembled, the back of the mounting screw and nut will rest freely inside the drilled-out hole in the cargo floor (explained below). No screwing/unscrewing is required for use or removal of the rear plate once it has been assembled.



MOUNTING PLATE INSTALLATION

1. Once the rear plate is fully assembled and positioned correctly on the step bumper and cargo floor, locate and place a center mark on the cargo floor using the single (larger) hole in the horizontal portion of the top plate. On this mark, drill a 5/16" or 3/8" diameter hole approximately 1/2" in depth. The recess from this drilled hole will be used to receive the single (larger) mounting screw and nut provided. Center the mounting plate over the hole and attach it using the four (4) small Phillips-head screws provided. This mounting plate is the only permanent part of the installation. The assembled rear plate can then be installed and removed by hand.
2. Provided the rear plate is properly assembled and used, the majority of the load weight will be transferred to the cargo floor, not on the step bumper.
3. Remove the assembled rear plate for vehicle operation. The rear doors will not close with the rear plate installed.
4. Secure the rear plate during transport.

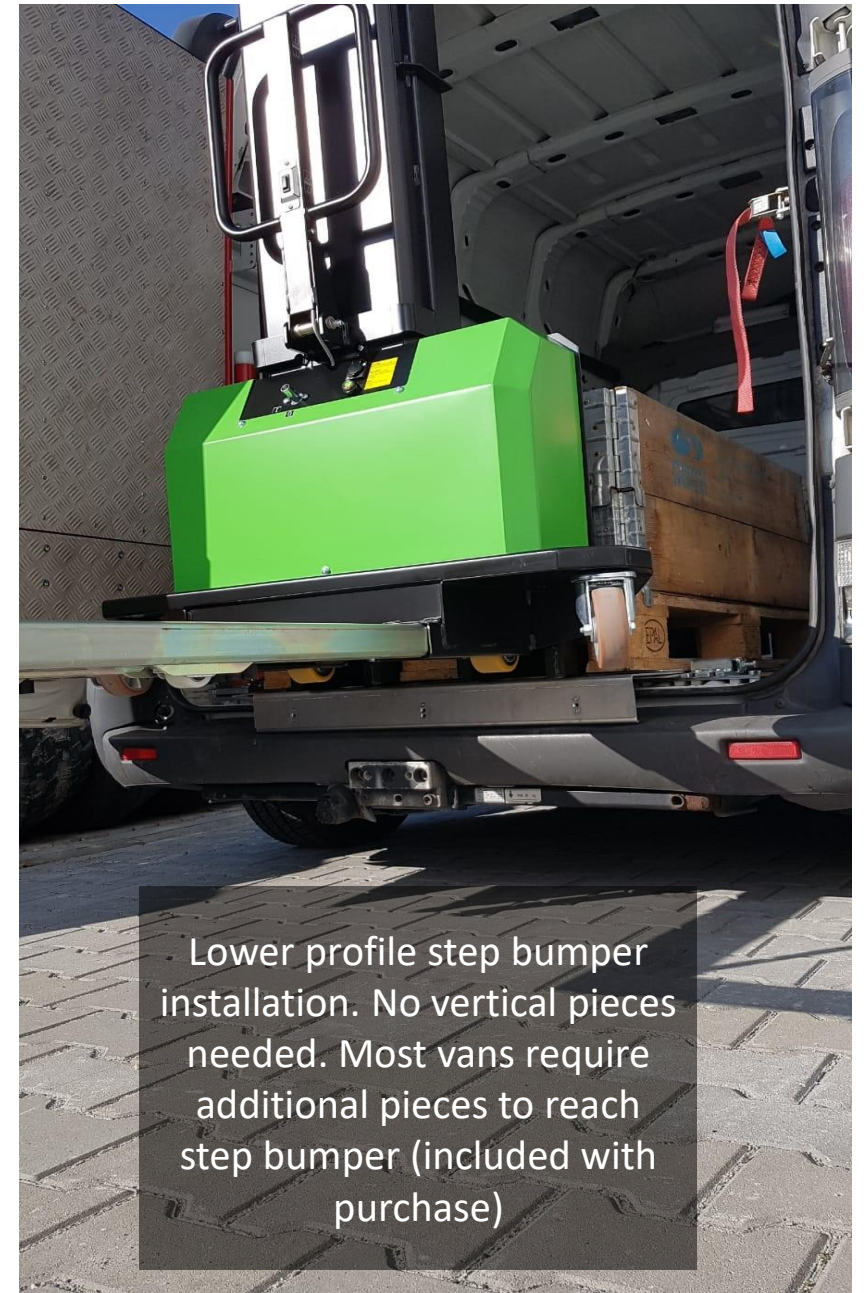




Installation Photos



Permanent mounting plate
installed on plywood floor



Lower profile step bumper
installation. No vertical pieces
needed. Most vans require
additional pieces to reach
step bumper (included with
purchase)

Installation Photos

Top view: Plate attached and secured to plywood floor



Rear view: This installation used two vertical pieces due to distance from top of step bumper to cargo van floor. Typically, only one vertical piece is needed.



Installation Photos



Side view: Top plate angled
slightly downward toward inside
of vehicle



Completed cargo van
install